



Parent Child and Family Support Program



Further enquiries about the program, the range of services or the process of making a referral can be made by visiting or telephoning your nearest QuIHN office at the locations described below.

Brisbane

89-101 Gipps St
Fortitude Valley, QLD
4006
Tel. 07 3620 8111
Fax: 07 3854 1070
www.quihn.org

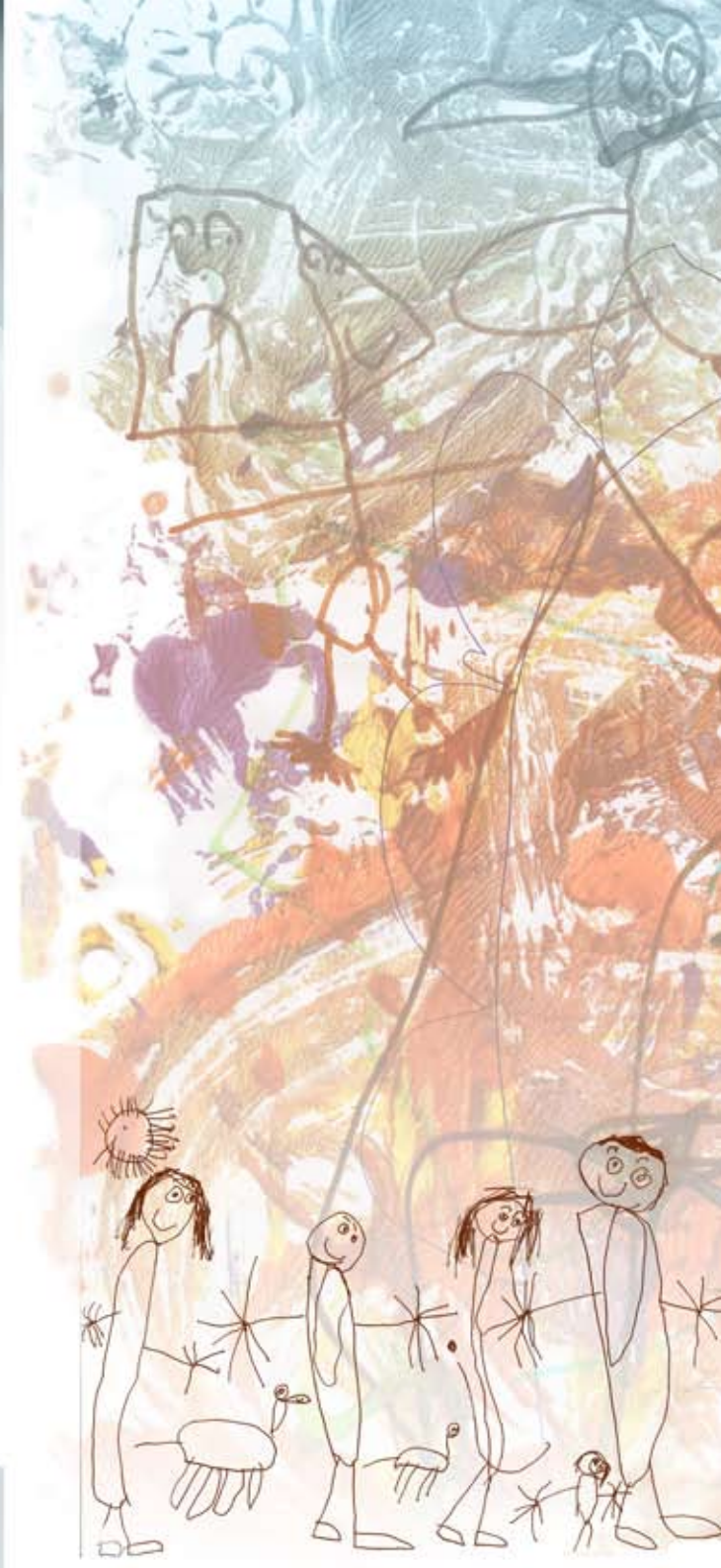
Sunshine Coast

59 Sixth Ave
Cotton Tree, QLD
4558
Tel. 07 5443 9576
Fax: 07 5479 1918

Gold Coast

12/89-99 West
Burleigh Rd
Burleigh Heads, QLD
4558
Tel. 07 5520 7900
Fax: 07 5520 7344

- **Treehouse Program**- this 10 session, eighteen hour group based program engages with parents in a non judgmental and accepting way, and by working in partnership with them, assists them to resolve parenting issues and/or child protection concerns. The program contains therapeutic, educational and skills development components.
- **Koping Adolescent Program** is a peer support group program for young persons aged 12- 18 years living in households affected by a mental health and/or drug use problem. It consists of three seven hour sessions and is run over a four week period. The program seeks to promote understanding of mental health and drug use problems, and enhance resilience and self esteem.
- **KIDZ CLUB** is a 2 day school holiday program for primary school age children living in households affected by a mental health and/or drug use problem. It provides fun and interesting activities including story telling and art work, with a therapeutic focus.
- **S.O.S Workshop**- this one day or two half day group workshop discusses the nature of dual diagnosis, building emotional strength, dealing with stigma and isolation, the importance of boundaries, self care, and developing networks of support. It is intended for those who care for and support people with a mental health and/or drug use problem.
- **Treehouse Support Group** meets on a fortnightly basis and provides parents with a social and safe place to discuss the triumphs and tears of parenting.
- **Individual counselling** is available for parents, children, family groups and significant others/carers. Counselling approaches are tailored to meet client needs and the nature of the issues they are seeking to address.



Are mental health and drug use problems threatening your family's wellbeing?

Are you concerned about how your mental health and drug use issues may be impacting on your children?

Are you being affected by the mental health and drug use problems of someone else?



Original artwork by Margaret (T) and Dawn (A)

The new QuIHN Parent Child and Family Support Program provides counselling, education, support and advocacy for parents, children, and significant others/carers affected by mental health and/or drug use issues.

These centre based and outreach services are offered through a range of individual and group based programs and activities which can be accessed one at a time or combined as packages depending on client's needs.

The services that can be chosen include:

- Treehouse Program
- Koping Adolescent Program
- KIDZ CLUB
- S.O.S Workshop
- Treehouse Support Group
- Individual counselling



Parent Child and Family Support Program

